



J A V E L I N

desktop card printers



Javelin™ FLX

flexible online printing

The Javelin FLX series of card printers combines instant issuance with the flexibility of online open card format printing. Professional performance printers from NBS with the muscle you need and the functionality you want.

The Javelin FLX series of card printers has been designed to meet the demand for a reliable and flexible printer at an affordable price. Javelin FLX series printers can be attached directly to your network with the built-in Ethernet port without the need for a separate PC. You can create and store multiple card designs and layouts for multiple users using the standard built-in fonts provided. Or you can add custom fonts and graphics using the Javelin Dashboard software supplied with the printer.



Compact and Flexible

- Small footprint easily fits into a wide range of locations: on a desktop or under the counter.
- Print in full color or monochrome
- Flipper for dual-side printing (option)

Easy-to-Use

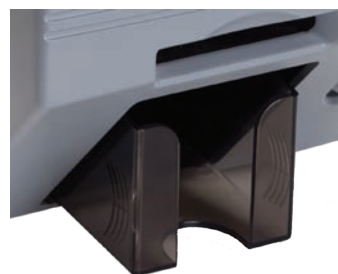
- LCD screen displays printer status and diagnostics
- Easy to change ribbon and thermal print head
- RFID protection for color ribbons

Network and Encoding Options

- Built-in 10/100 Ethernet
- 3-track magnetic stripe encoding (HiCo/LoCo)
- Contact and contactless smart card capabilities



Easy to read LCD screen



Output stacker



100-card Input hopper

Ideal for:

- Casino player tracking
- Cruise ships
- Race track applications
- Loyalty club membership
- Leisure & Hotel applications
- ... and more!





Genuine NBS Supplies

Your choice of card printer supplies is critical. It is a primary factor affecting the reliability and consistency of printing.

Genuine Javelin supplies meet stringent quality standards and are tested for optimum performance with Javelin card printers.



Print

• Print Method	thermal transfer (mono), dye-sublimation (color)
• Print Speed	mono: 6 sec/card, YMCKO: 26 sec/card (single-side) YMCKOK: 38 sec/card (dual-side)
• Print Mode	single-side printing (option: dual-side printing)
• Resolution	300dpi (11.8 dpm), 16.7 million colors
• Ribbons	KrO: 500 prints/roll, YMCKO: 200 prints/roll, YMCKOK: 167 prints/roll, Half-panel YMC plus full-panel KO: 300 prints/roll Monochrome: black, silver, gold, red, blue, white, scratch-off: 1000 prints/roll

Card

• Card Types	PVC, composite PVC
• Card Thickness	0.5mm - 1.2mm; 20mil - 50mil
• Card Format	ISO CR-80-ISO 7810: 53.98mm (W) x 85.60mm (L) / 3.375" x 2.125"

Encoding

• Magnetic Stripe	ISO7811 (tracks 1, 2, 3); Hi-Co/Lo-Co
• Contact (IC) (option)	ISO 7816, EMV, PC/SC
• Contactless (RF) (option)	MiFare, ISO 14443 A,B, ISO15693

Other

• Barcodes	Generates the following bar codes in layout mode: EAN 13 & 8, UPC-A, Code 39, Codabar, Code 128, Code 2 of 5
• Fonts	Swiss Regular: 6, 8, 10, 14, 18, 24 pt; Swiss Italics: 6, 8, 10, 14 pt; OCRA: 10, 12 pt; Dutch Bold: 6, 8, 10, 18, 24 pt
• CPU	32 bit processor
• RAM	16 MB
• LCD	4 lines x 16 characters
• Interface	Built-in Ethernet (10/100 Mbps); USB 2.0; RS 232
• Printer Driver	Windows 2000, XP, Server 2003/2008, Vista, Windows 7 Open card format for non-Windows platforms
• Security	Kensington(R) security anchor Kensington(R) ClickSafe(TM) security cable (option) Lockable input hopper (option)
• Printer Warranty	2 years

Card Feeding Method

• Single Card	From front of printer
• Auto Feeding	Input Hopper: 100 cards Output Stacker: 70 cards

Temperature

• Operating Temperature	0 - 50°C / 32 - 122°F, 20 - 90% RH
• Storage Temperature	-25 - 70°C / -13 - 158°F

Power

• Adaptor	Input: 100V - 250V, 50/60Hz; output: DC 24V
• Approvals	FCC Class B, CE and UL & CUL approved

Size

• Dimensions	403mm (L) x 202mm (H) x 192mm (W) 15.8" x 8.0" x 7.6"
--------------	--



Easy to change ribbon and print head



Genuine NBS Supplies



Lockable input hopper (option)